



Covac Ltd, Unit 7, St. John's Business Park, Rugby Road, Lutterworth, Leicestershire, LE17 4HB.
Tel: +44 (0)1455 556631 • Fax: +44 (0)1455 550872 • Email: info@covac.co.uk • Web: www.covac.co.uk

COVAC COMPLETION REPORT

- Client - **XXXXX Housing**
- Address - **5 No. Blocks
XXXXXXXXXXXX
Glasgow**
- Site Contact - **XXXXXXXXXX**
- Project Brief - **The Internal Refurbishment of
20 No. Concrete CWS Tanks**
- System Specification - **3M Scotchkote™ 165PW
Solvent Free Polyurethane
(Formerly Known as COPON Hycote 165PW)**
- Nominal Dry Film Thickness - **1000 Microns**
- Completion Date - **25th April 2008**
- Site Supervisor - **Carl Broadley**
- Report Prepared by - **Craig Phillips**
- COVAC Contract Ref: - **695**



Company registration number: 03273430
Registered in England VAT number: 670 431234
© Copyright 2008 COVAC Ltd. All rights reserved.





SUMMARY OF WORKS

The Brief

XXXXXXX Drive – 5 Blocks (4 tanks per block)

10 basement concrete tanks each sized at approx:- 1.15m x 1.2m x 2.1m

10 roof top concrete tanks each sized at approx:- 3.6m x 2.6m x 2m

Internally the tanks had previously been coated up to the water line with asphalt, above the water line & the underside of the roof slab was bare concrete.

As the roof of the tanks form part of the plant room ceiling, stalactites had formed over the years into the tank caused by rain water leaking through the concrete roof.

20 No. CONCRETE CWS TANKS

**THIS PICTORIAL REPORT COMBINES THE REFURBISHMENT OF
ALL 20 No. TANKS AT XXXXXXXXXXXX DRIVE.**





The above and following photographs show typical access to the concrete water retaining structures.







The photographs show the structures both filled with water and drained but prior to any preparation work.







These images show the asphalt coating that was previously applied up to the water line. Above the water line and the roof slab was bare concrete.





These photographs show the internal surfaces whilst being prepared by COVAC operatives to raise a suitable surface profile.

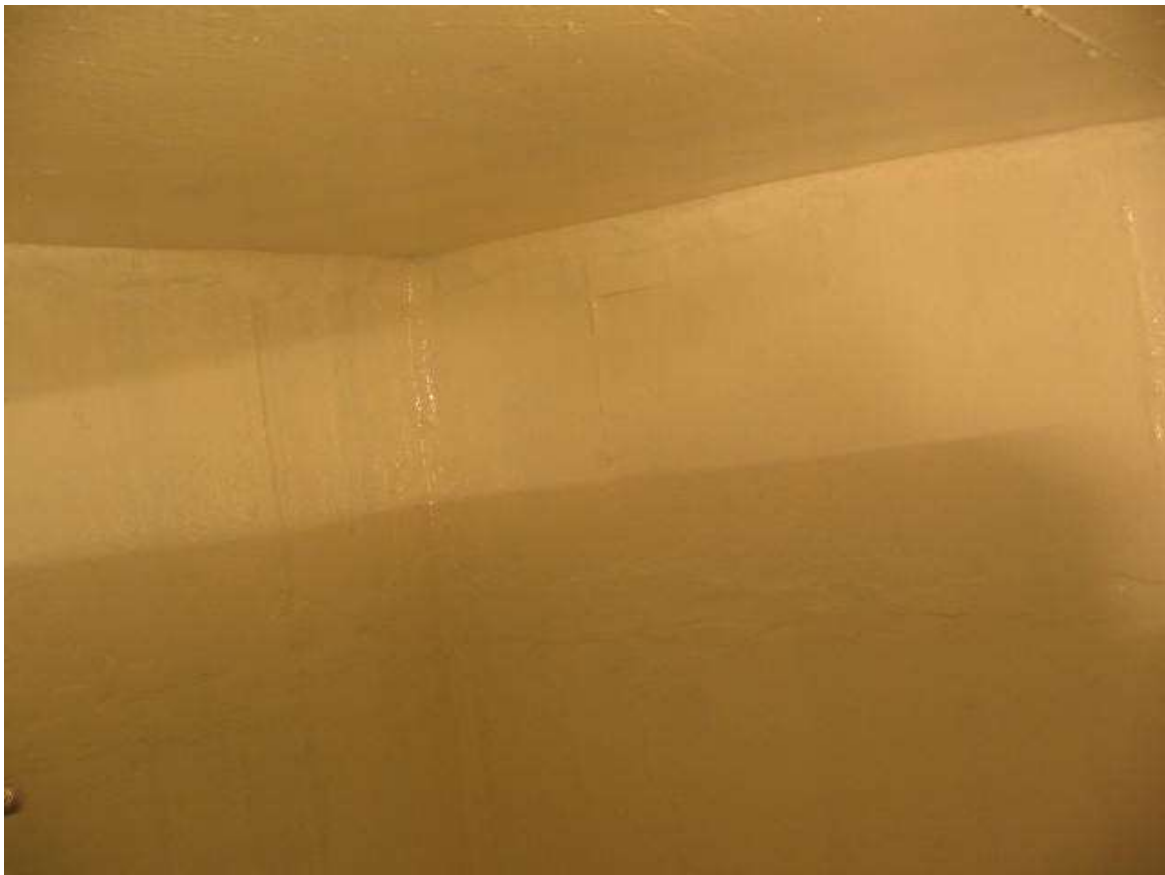
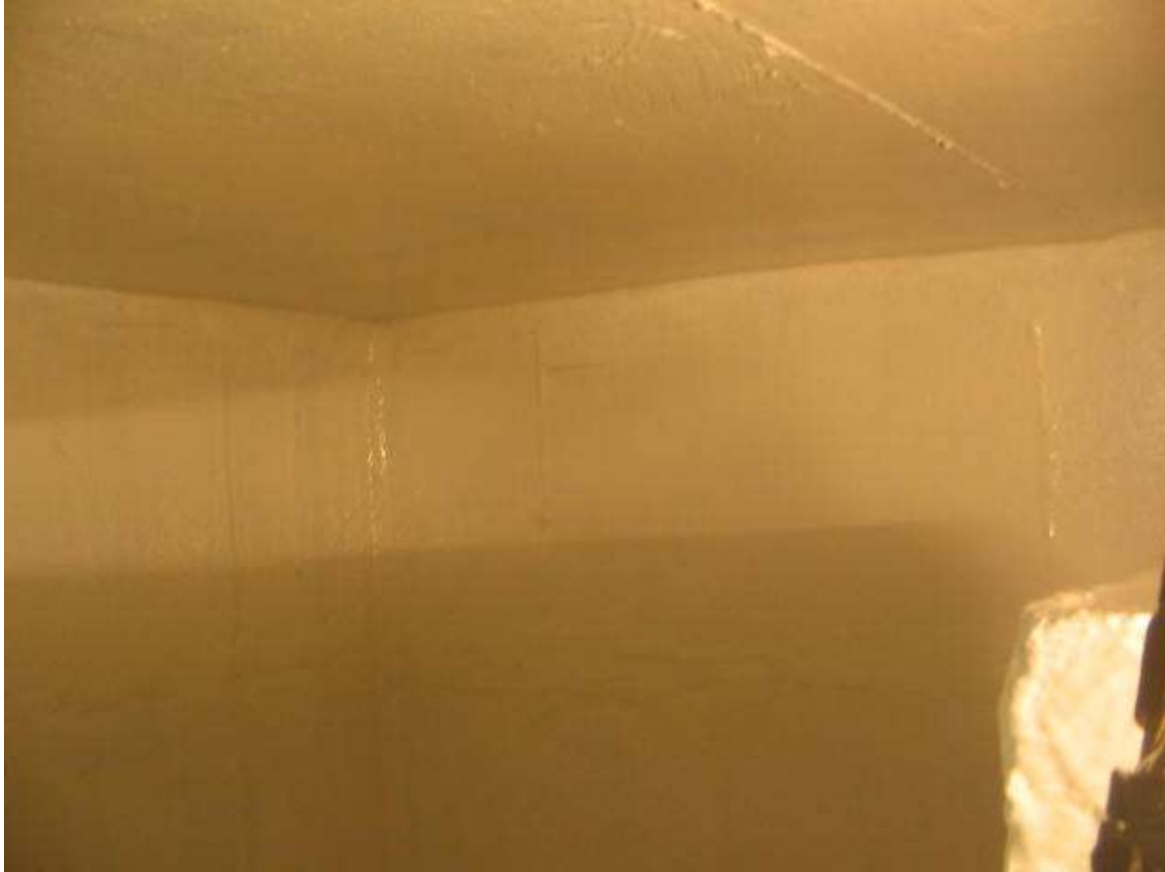


These images show the thickness and quantity of the asphalt coating removed from the internal substrate of the tanks.





The above photographs show the WRAS approved cementitious screed applied to the prepared concrete surface which was allowed to cure and dry completely for the specified period, prior to the application of 3M Scotchkote™ 165PW Clear Sealer to optimise the surface bonding for the following coats as well as satisfy the porosity of the bare concrete surface.



These photographs show the tanks substrate following the first coat of 3M Scotchkote™ 165PW.



All intricate areas were again 'stripe coated' for a second time followed by the final application of the 2nd coat of 3M Scotchkote™ 165PW. These images show the tanks fully relined and refilled with potable water.





