



Covac Ltd, Unit 7, St. John's Business Park, Rugby Road, Lutterworth, Leicestershire, LE17 4HB.
Tel: +44 (0)1455 556631 • Fax: +44 (0)1455 550872 • Email: Info@covac.co.uk • Web: www.covac.co.uk

COMPLETION REPORT

Client : **XXXXXXXXXXXX**

Project Brief : **The Internal Refurbishment of 1 No. Flat, Steel Cooling Tower**

Site Address : **Northamptonshire**

Site Contact : **XXXXX**

System Spec : **3M Scotchkote™ 165PW**
(Formerly Known as COPON Hycote 165PW)

Film Thickness : **1000 Microns**

Covac Supervisor : **Tim Ray**

Completion Date : **14th February 2005**

Compiled By : **Adrian Emmett**

Covac Ref : **407**





SUMMARY OF WORKS

The Brief

Mechanical Preparation

The Product

3M Scotchkote™ 165PW offers numerous economic, technical and environmental features and benefits, some of which are highlighted below: -

- WRAS / DWI Approved
- Complete Solvent Free Technology
- Extremely Fast Curing Times, even at low temperatures
- High degree of flexibility @ > 35%, capable of accommodating structural movement compared with epoxy / bitumastic coatings of <1.0%
- Superb adhesion to steel, concrete, GRP and many other substrates.
- High levels of impact and chemical resistance.
- Reduced downtime of storage tanks and process vessels - 6hrs after completion.
- Long life performance with minimal maintenance
- Easy clean, ceramic tile-like finish
- Application by brush / roller or plural component spray equipment
- Excellent track record for applications such as drinking water tanks, towers, reservoirs etc.

COVAC employs competent, trained and focused operatives who always achieve an optimum quality of surface preparation application, resultant finish and subsequent longevity. Due to the highly sensitive parameters involved in the upgrading of water retaining structures, today's sophisticated increasingly demands much more than just a supplier of product and a separate contractor to carry out the work. COVAC possesses an unparalleled wealth of experience in connection with the refurbishment of these types of structures and as a preferred channel partner of 3M E.Wood can offer **Single Source Responsibility Guarantees**.

This service offers peace of mind to the client and alleviates any risk of contractor / product supplier disputes in the event of a problem.

Brush & Roller Application



Prior to start of the internal preparation work, external temporary scaffolding was erected to assist with access and the removal of the packers for the full period of the project.



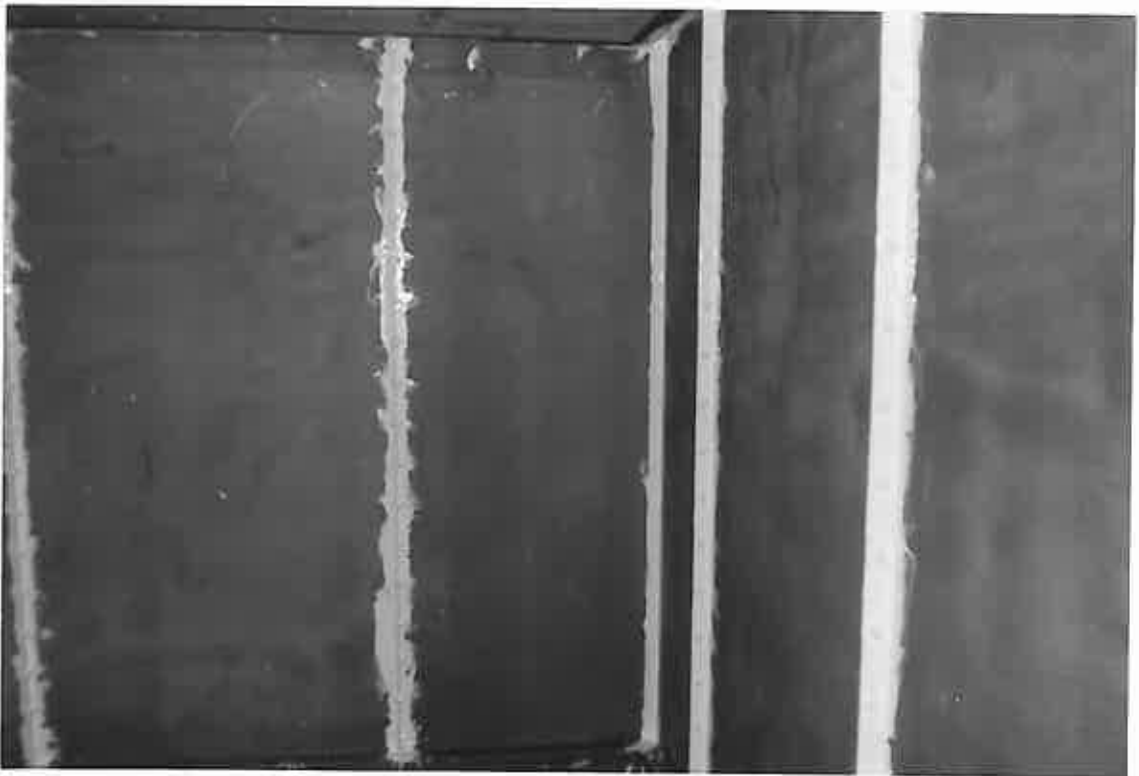
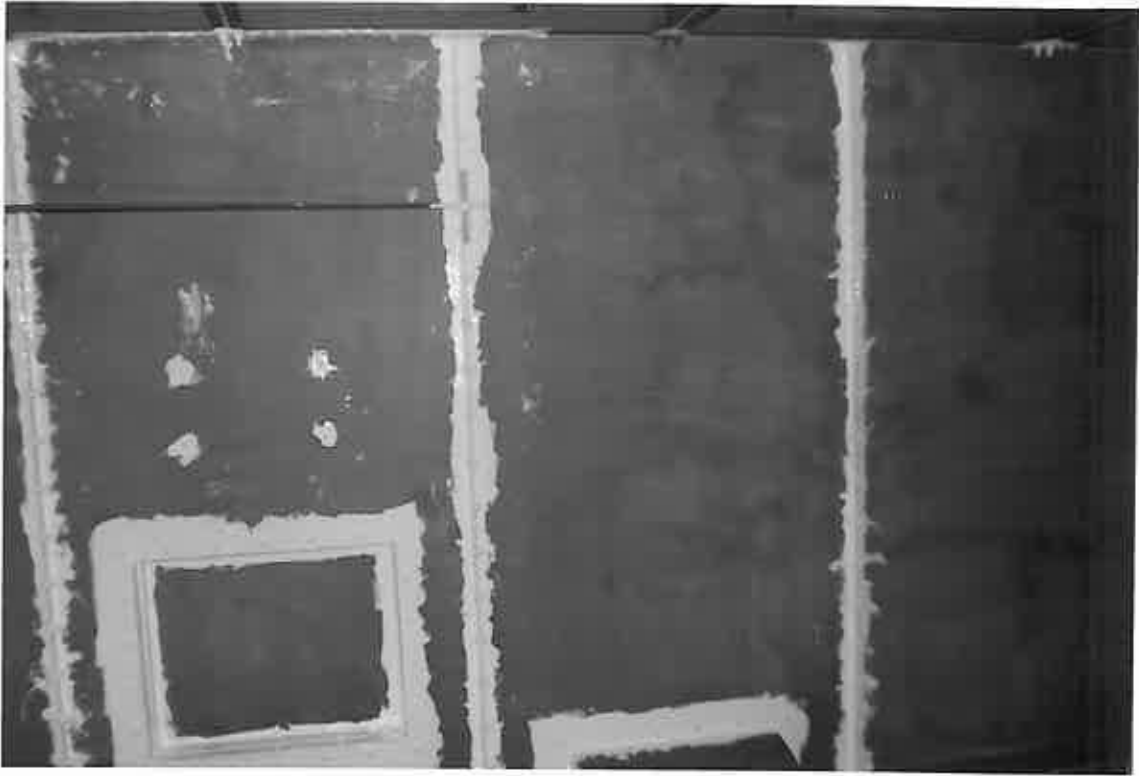
These photographs show the internal substrate of the tower and the severity of the corrosion. The previous coating system, which had reached the end of its useful life showing due to sub-film corrosion, low film build and general deterioration.





These photographs show the internal substrate having been prepared back to bare metal utilizing dry abrasive blasting equipment.





All seams, joints and flanges etc, were firstly stripe coated prior to a full coat application of COPON Hycote 165 PW (Cream).



These photographs show the first coat of COPON Hycote 165 PW (Cream) being applied by means of Brush / Roller in order to achieve a nominal w/dft of 500 Microns.





All internal surfaces were stripe coated again prior to the second full coat of 165 PW (Grey), being applied by means of Brush / Roller in order to achieve a total w/dft of 1000 Microns (1mm).



