

# COMPLETION REPORT

Client : **Food Manufacturer**

Project Brief : **The Internal relining of 1 No. Steel Potable Water Retaining Structure (1 of 3 No. Compartments)**

Site Address : **North England**

Site Contacts : **XXXXXXXXXX**

System Spec : **3M Scotchkote™ 165PW**  
(Formerly Known as COPON Hycote 165PW)

Film Thickness : **1000 Microns**

Covac Supervisor : **Timothy Ray**

Project Suspended : **8th April 2010**

Compiled By : **Adrian Emmett**

Covac Ref : **943**

# SUMMARY OF WORKS

## The Brief

1 No. Steel, potable 'truff' tank, located externally at ground level and sized at approximately:- 14.1m x 6.7m x 8.5m.

The existing internal coating had reached the end of its useful life due to sub-film corrosion, low film build, general deterioration and subsequent de-bonding.

These images show the external position of the structure:-



The internal of the structure has 2 No. steel divisional walls, which 'splits' the structure into 3 No. separate compartments, each sized as follows:-

- 1 No. Compartment, sized at approximately 6.7m x 6.7m x 8.5m
- 2 No. Compartments, each sized at approximately 3.7m x 6.7m x 8.5m (to be relined at a later date)

These images showed the internal condition of the existing coating system:-



*We, therefore, proposed the following: -*

**Mechanical Preparation**

**Spray Application**

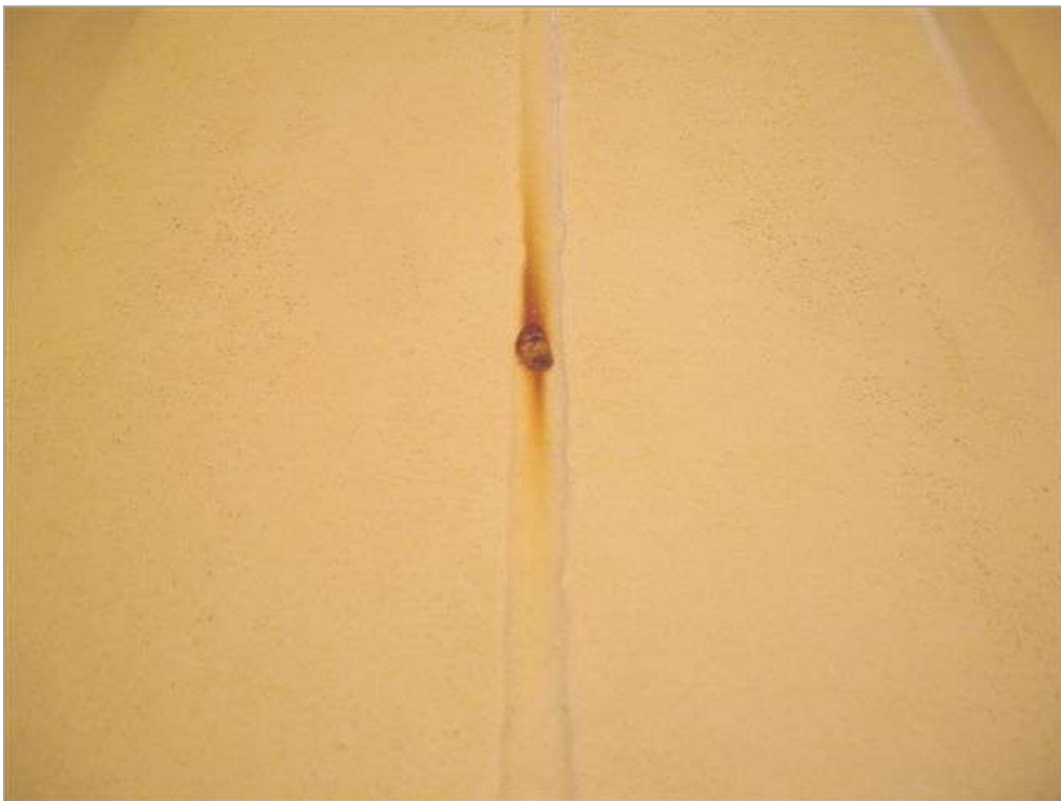
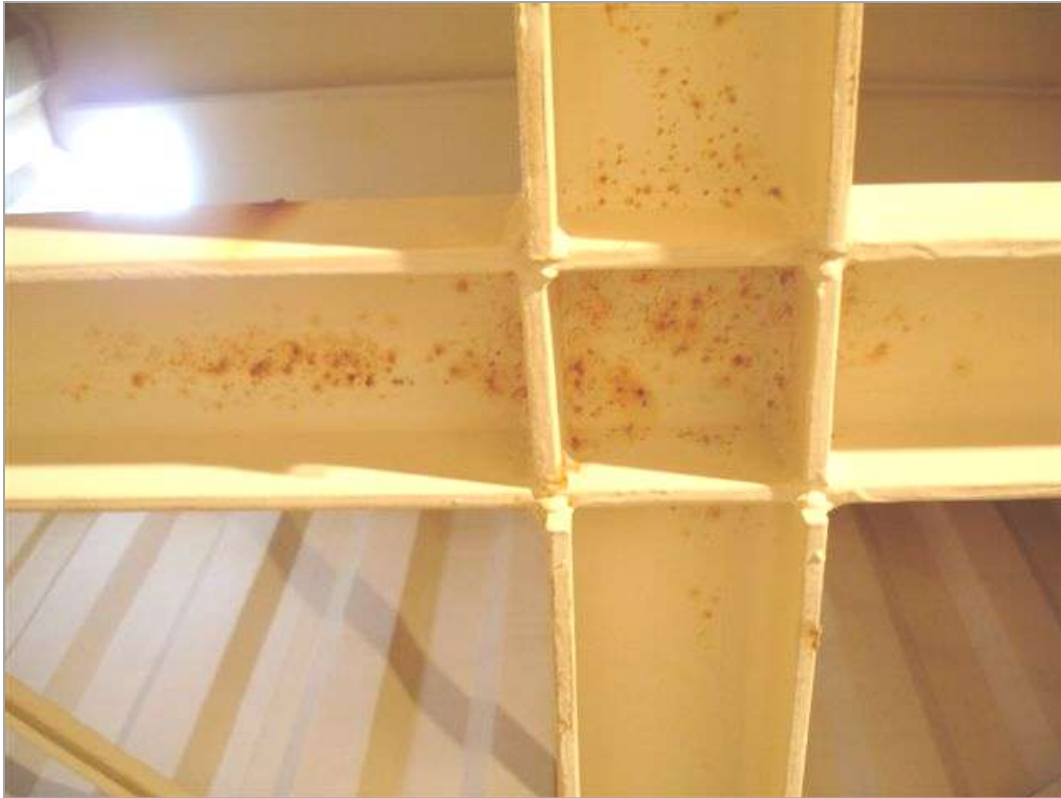
# 1. PICTORIAL REPORT

1 No. Compartment sized at 6.7m x 6.7m x 8.5m





**These photographs show the internal substrate of the compartment having been drained of water, but prior to the relining work commencing.**

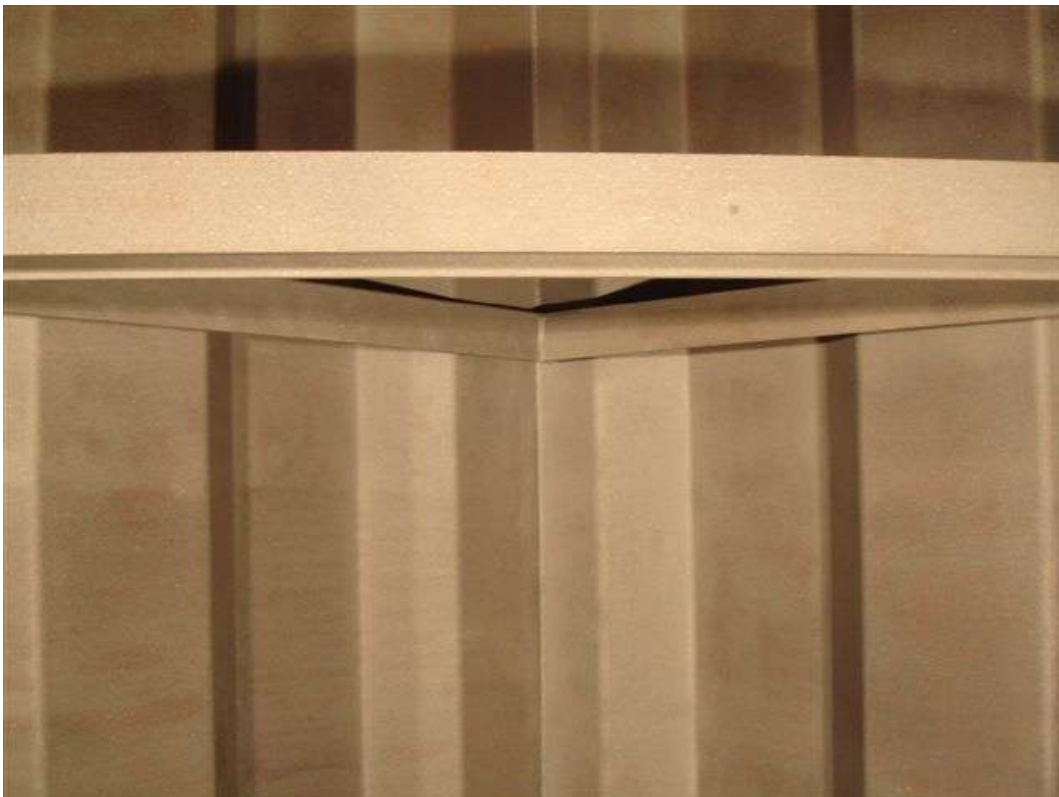








**All internal surfaces were prepared to the appropriate standard utilising dry abrasive blasting equipment in order to remove all contaminants and a suitable profile raised to ensure the full adhesion of the coating system.**





To maintain the specified film thickness all joints, seams etc. received an initial stripe coat prior to carrying out the overall application and the following photographs show the compartment after being fully coated with 3M Scotchkote 165PW (grey) Solvent Free Polyurethane, by means of plural component spray equipment.





